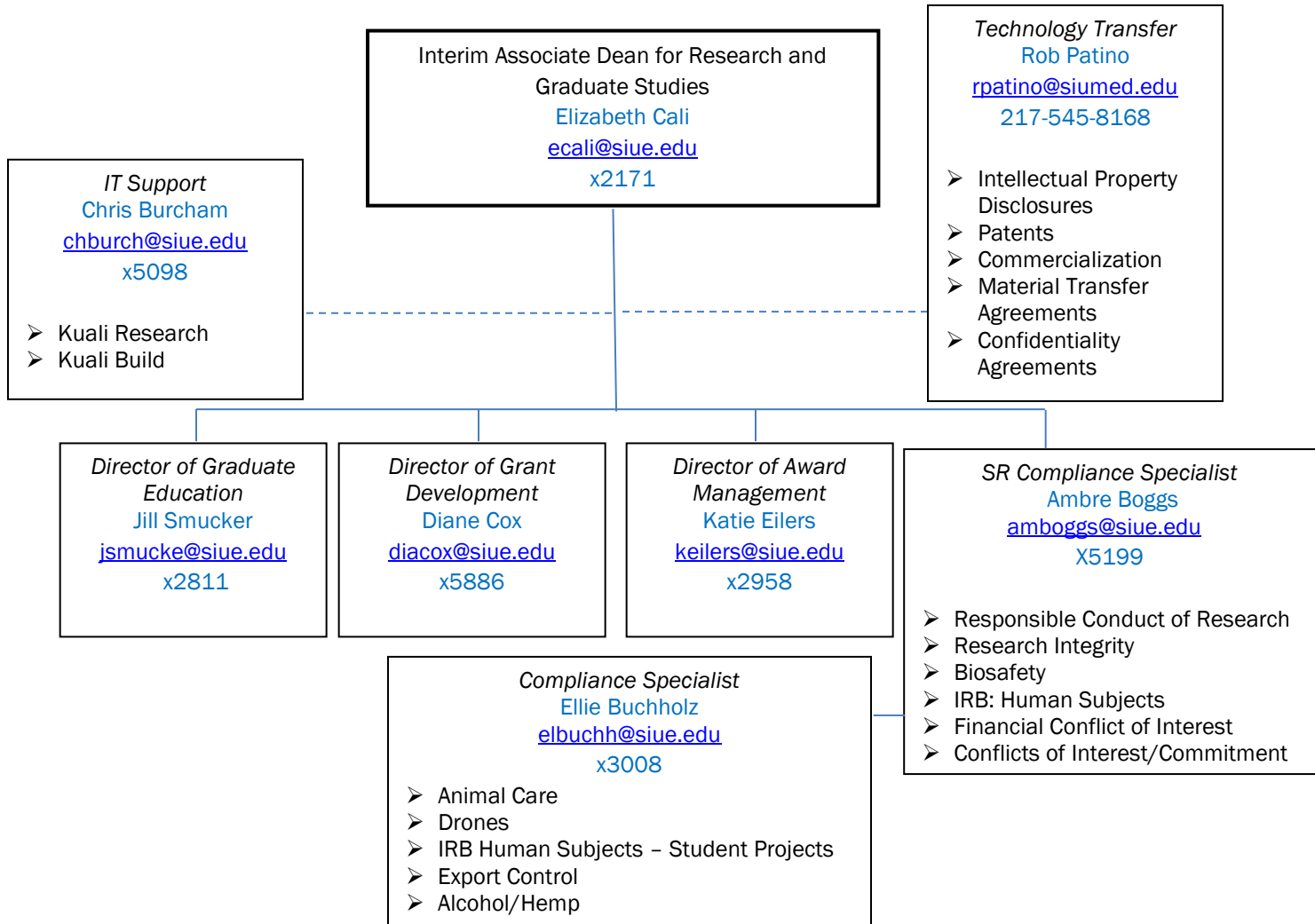
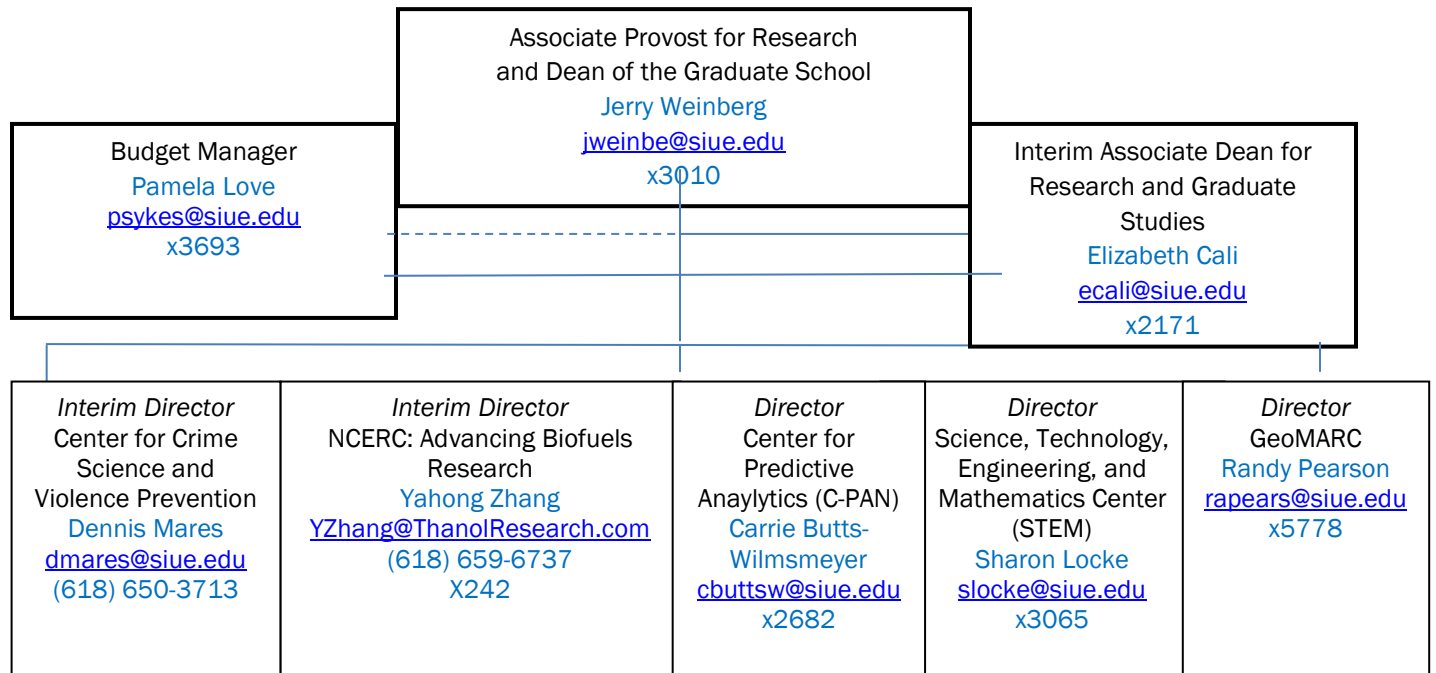


**Graduate School Organizational Chart**  
**Updated February 2024**



*Director of Award Management*  
Katie Eilers  
[keilers@siue.edu](mailto:keilers@siue.edu)  
x2958

- Guideline Interpretation
- Special Reporting & Other Requests
- External Audits
- Financial Compliance

*Grant Award Administrator & Negotiator*  
Kelly Thompson-Hess  
[kethomp@siue.edu](mailto:kethomp@siue.edu)  
x5364

- Grant and Contract Award Processing
- Negotiations

*Budget Manager*  
Pamela Love  
[psykes@siue.edu](mailto:psykes@siue.edu)  
x3693

- Internship Agreement Financial Management
- Indirect Cost Recovery
- Non-competitive Internal Funding Programs

*Grants/Contracts Accountant*  
Connie Wyvell  
[cwyvell@siue.edu](mailto:cwyvell@siue.edu)  
x3162

- External Grant Financial Management

*Grants/Contracts Accountant*  
Misty Newman  
[mdubois@siue.edu](mailto:mdubois@siue.edu)  
x3008

- External Grant Financial Management

*Grants/Contracts Accountant*  
Bonnie Warner  
[bowarne@siue.edu](mailto:bowarne@siue.edu)  
x3117

- External Grant Financial Management

*Director of Grant Development*

**Diane Cox**

[diacox@siue.edu](mailto:diacox@siue.edu)

x5886

- External Proposals for Large, Multidisciplinary Projects
- Internal Funding Programs
- Research Initiatives

*Pre-Award Specialist*

**Suzanne Mushaney**

[smushan@siue.edu](mailto:smushan@siue.edu)

X5887

- External Grants: Proposals, Budgets and Application Preparation
- Faculty/Department Training
- Competitive Internal Funding Programs

*Pre-Award Specialist*

**Nick Gianoulakis**

[ngianou@siue.edu](mailto:ngianou@siue.edu)

x5618

- External Grants: Proposals, Budgets, Application Preparation
- Faculty/Department Training
- Competitive Internal Funding Programs

*Pre-Award Specialist*

**Jill Laughlin**

[jilaugh@siue.edu](mailto:jilaugh@siue.edu)

x3114

- External Grants: Proposals, Budgets and Application Preparation
- Faculty/Department Training
- Competitive Internal Funding Programs

*Director of Graduate Education*

**Jill Smucker**

[jsmucke@siue.edu](mailto:jsmucke@siue.edu)

x2811

- Requests for Exceptions
- Integrative Studies/Healthcare Informatics Liaison
- Program Reviews
- Graduate Catalog
- Competitive Graduate Award & Graduate Scholar Award
- GPD Liason & GPD Handbook

*Office Support Specialist*

**Rhonda Bailey**

[rhbaile@siue.edu](mailto:rhbaile@siue.edu)

x3010

- Graduate Assistant Contracts (Backup)
- Graduate Assistant Tuition Waivers (Backup)
- Primary Reviewer for Theses Review
- Support for Internal Graduate Student Funding Programs
  - Travel Grants (Backup)
  - Publication Awards (Backup)
  - Editing Awards (Backup)
  - OTA/OTAA/RGGS/RGRDS
- Graduate Student Website
- Graduate School Events
  - Graduate School Symposium
  - Graduate Student Awards Reception

*Office Administrator*

**Christina McGuiggan**

[cmcguig@siue.edu](mailto:cmcguig@siue.edu)

x3164

- Graduate Assistant Contracts
- Graduate Assistant Tuition Waivers
- Theses Review
- Graduate Student Website
- Graduate Assistant Handbook
- Graduate Committee on Assessment