

compassion • integrity • excellence • inclusivity • collaboration • creativity



# Dean's Report 2017



SOUTHERN ILLINOIS UNIVERSITY  
**EDWARDSVILLE**  
SCHOOL OF NURSING



## From the Dean



As the School of Nursing continues to thrive, I'm pleased to share some highlights of the exciting accomplishments and initiatives going on.

Our undergraduate program on both the Edwardsville campus and the regional campus in Carbondale, as well as the accelerated bachelor's in nursing program, maintain full cohorts. Our RN to BS program, with its unlimited capacity, sustains an enrollment of over 600 students, while graduating over 60 graduates every six months.

This year, our graduate program enrollment has experienced a 40-percent increase. For the third consecutive year, both the RN to BS program and our graduate programs were ranked nationally by *U.S. News and World Report*.

The global reach of our school will take on new meaning this year. There are three faculty/student service trips and one student exchange program planned that will span four different countries. We are excited to offer these learning opportunities for our students and to contribute to international healthcare delivery.

Our Simulated Learning Center for Health Sciences, otherwise known as our student lab, is completing its third contract year with Laerdal Incorporated to enhance and expand simulation capabilities. We now have specialized and comprehensive simulation scenarios to enhance student learning in all of our clinical courses. In addition, an IT support specialist works in our lab to support our coordinator and faculty with the design and delivery of more simulation capabilities.

In April 2018, we will participate in our next accreditation visit by the Commission on Collegiate Nursing Education. Having always been accredited since 1970, the School looks forward to once again touting its excellence in nursing education.

On behalf of the School's faculty, staff, and students, I thank our alumni, agency, community partners, and the University community. Through their continued support, the School's legacy for excellence can, and does, continue. Here's to another successful year!

Sincerely,

*Laura W. Bernaix*

Laura Bernaix, PhD, RN  
Dean

## From the Alumni Board

Dear Fellow Alumni,

It is time for a new school year filled with new opportunities and excitement! As the SIUE School of Nursing continues to grow and welcome more students, it is even more important to find ways to stay involved and learn more about exciting new opportunities.

The School's alumni advisory board is a perfect way to serve as a liaison, as a volunteer for student and alumni events, or as an ambassador between the School and community. With the board, you can be a part of bringing the School's mission to life.

If you would like to join, please email Kris Heather at [kheathe@siue.edu](mailto:kheathe@siue.edu). Students, the board members and I look forward to meeting and working with you throughout this academic year. We wish you all the best!

Best wishes,

*Rachel E. Smiley*

Rachel Smiley BSN '11, MSN '15  
President, SIUE School of Nursing Alumni Board

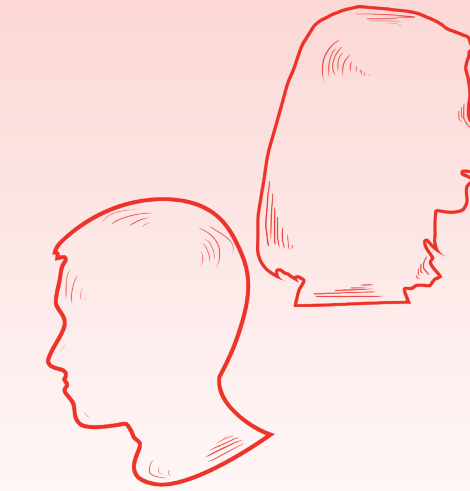


## School of Nursing at a Glance

### Points of Pride



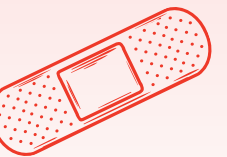
- National ranking from *U.S. News and World Report*: online graduate programs and RN to BS program
- Fully accredited by the Commission on Collegiate Nurse Education and the Commission on Collegiate Nursing Education
- 40 percent increase in new enrollment in graduate programs for fall 2017
- Record overall enrollment for fall 2017 semester



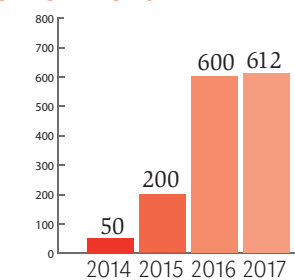
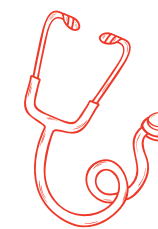
### Undergraduate and Graduate Enrollment by Program (enrollment numbers for each) for 2017

- Nursing Bachelor of Science - **697**
- Accelerated Bachelor of Science - **77**
- Accelerated RN to BS - **612**
- Family Nurse Practitioner Master's\* - **50**
- Health Care and Nursing Administration Master's - **31**
- Nurse Anesthesia Master's\* - **20**
- Nurse Educator Master's - **37**
- Family Nurse Practitioner Doctor of Nursing Practice - **51**
- Nurse Anesthesia Doctor of Nursing Practice - **69**
- Post-Master's Doctor of Nursing Practice - **19**
- Post-Master's Doctor of Nursing Practice and MBA - **2**

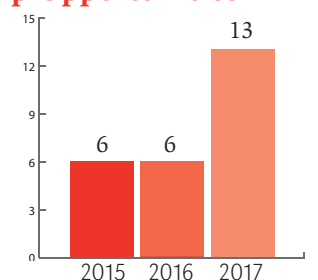
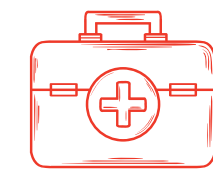
\*Reflects students admitted prior to program transitioning from master's to doctoral



### RN to BS enrollment



### Fellowship Opportunities



## About the School of Nursing

The vision of the SIUE School of Nursing is to educate and develop nurses as care providers, scholars and leaders able to meet the health challenges of a diverse and complex world. The School values compassion, integrity, excellence, inclusivity, collaboration and creativity.

## About SIUE

SIUE awards degrees in undergraduate, graduate and doctoral programs encompassing the arts, sciences, nursing, education, health, human behavior, business and engineering. The Schools of Dental Medicine and Pharmacy award doctor's first-professional degrees in dental medicine (DMD) and pharmacy (PharmD). Doctoral programs are available in nursing practice and educational leadership. Cooperative PhD programs in historical studies, environmental resources and policy, engineering science, and computer engineering are offered with SIU Carbondale.

## School of Nursing's Online Programs Ranked Among Nation's Best



The School of Nursing continues to garner national attention for its online programs.

In *U.S. News & World Report's* 2017 Best Online Bachelor's Programs list, the School's RN to BS program was ranked 68th among 311 schools, placing it among the top five online bachelor's programs in Illinois. The program jumped 43 percent from its previous ranking.

The School's online graduate degree programs, including a family nurse practitioner doctor of nursing practice (DNP), post-master's DNP, and master's degrees in health care nursing administration and nurse educator, was ranked 94th among 140 schools.

Dr. Laura Bernaix, dean of the School of Nursing, said the School's online learning opportunities provide students with high-quality education through the use of small class sizes, strong faculty mentoring and support, and robust program content.

"The *U.S. News* rankings reflects our continued commitment to providing excellent academic programs that prepare nurses to practice in a challenging and dynamic healthcare environment," Bernaix said.

Aside from its online programs, the School's record undergraduate enrollment of 1,371 students also assisted SIUE in its ranking as a Top 15 Midwest Regional Public University within the magazine's "Best Colleges of 2017" issue.

Rankings were based upon faculty credentials and training, student engagement, admissions selectivity, peer reputation, and student services and technology.

## DNP Program Preparing Expert Nurses for Leadership



With emphasis on evaluating evidence for practice and strengthening policy expertise, the School of Nursing's Doctor of Nursing Practice (DNP) program prepares expert nurses for leadership in professional nursing practice and patient-centered health care delivery. Specializations include post-master's DNP, family nurse practitioner and nurse anesthesia.

Amy Shaw, post-master's DNP '16, spent an extensive amount of time researching DNP programs before choosing SIUE.

"I take care of very sick babies in the NICU," Shaw said. "I felt a degree of moral obligation to take better care of these patients, and it seemed to me that the DNP was the best way to garner these skills and improve my practice."

Shaw found ample opportunities to learn, grow and connect with faculty members and colleagues through the online program. The format enabled her to fit her education into her busy schedule, and clear expectations and timelines kept her progressing to completion.

"I encourage anyone asking themselves whether or not to pursue a DNP to take the opportunity," Shaw said. "It will profoundly impact how you approach your patients, their families and your mission in work in ways you can't even imagine."

## Regional Program Meeting Needs in Southern Illinois

To address a statewide nursing shortage, the School of Nursing established a regional baccalaureate nursing program at Southern Illinois University Carbondale (SIUC) in 2010. The dual-enrollment program allows students to fulfill their undergraduate requirements and complete the SIUE nursing curriculum at SIUC. Clinical experiences are held at facilities in the Carbondale area, including Southern Illinois Healthcare, VA Medical Center and Heartland Hospital. Bachelor's degrees are conferred by SIUE.

"We saw the opportunity to meet a need for baccalaureate-prepared nurses in this region," said Melodie Rowbotham, PhD, director of the SIUE Regional Nursing Program in Carbondale, and associate professor of family health and community nursing. "This regional program enables us to efficiently meet students' needs and strengthen healthcare in southern Illinois."

Since its inception, program enrollment has quadrupled. The School continues to increase clinical opportunities, enhance the simulation lab and develop fellowship opportunities.



## Trio Joins Staff at World-Renowned Mayo Clinic

Madisson Haake, Courtney Levo and Bradley Marcum are using the skills they gained in the School of Nursing to serve patients at the world-renowned Mayo Clinic. The alumni joined the nursing staff of the prestigious Mayo Clinic in Rochester, Minn., soon after graduating in May 2017.

Influenced to enter the field by her mother's journey through nursing school, Haake is a critical care nurse in the clinical surgical trauma intensive care unit (ICU) and progressive care unit.

Levo, a nurse in the medical surgical transplant ICU, was inspired to become a caregiver after experiencing the hope Mayo Clinic gave her family regarding her brother's disabilities when all other options had failed.

Marcum, a critical care nurse in the cardiac surgery/heart and lung transplant ICU, realized his passion for nursing when he was a patient. After undergoing lung surgery during his freshman year at SIUE, he immediately shifted his academic focus to nursing.

"Graduating from the School of Nursing has allowed me to land this position in an elite ICU at a number one hospital," Marcum said. "It's a dream come true."



## Faculty Research

### Faculty Collaborate to Improve Practice

For area hospitals and health systems striving to implement evidence-based practice (EBP) and achieve better patient outcomes, the School of Nursing's faculty serve as an excellent resource from which to draw. Since 2011, Kay Gaehle, PhD, associate professor of primary care and health systems nursing, has worked with staff nurses and nurse clinicians at Memorial Hospital Belleville to improve practice and evaluate change.

"I'm an expert resource for the clinicians and staff," Gaehle said. "They identify problems or develop ideas, and I help them refine those according to research literature. Essentially, I'm doing scholarship that impacts other scholars, and the people I'm working with are truly focused on improving patients' experiences."



For example, staff realized that patients with undiagnosed sleep apnea were at high risk for post-operative respiratory depression. Nurses, clinicians, surgeons, healthcare informatics experts, and the anesthesia and sleep study departments implemented screenings to identify surgery patients who may have undiagnosed sleep apnea. Those patients are treated appropriately for optimal care during and after surgery. Patients who participated in a sleep study after recovering from surgery were indeed diagnosed with sleep apnea.



Similarly, regional health care system SSM Health approached the School two years ago, seeking to initiate an EBP project that would allow staff nurses to influence their practice. Ann Popkess, PhD, chair and associate professor of family health and community health nursing, began working with SSM nursing staff to address problems in treating alcohol users. When alcohol-using patients come into the hospital for unrelated issues,

complications frequently occur due to alcohol withdrawal.

"We were able to train roughly 400 nurse educators, pharmacists, informatics specialists, nurses and approximately 100 physicians to screen patients for alcohol dependency," Popkess said. "We also developed an online training module and have trained staff and physicians."

Two SSM hospitals are now implementing a pilot of the EBP project, aiming to reduce complications, including seizures, falls and violence; and measuring outcomes.

"This is change occurring from the bottom up, because it's staff-identified," Popkess said. "Many large organizations are not designed to implement change in this way. It's a credit to SSM, because of their commitment to successfully implement this project."

### Collaboration Focuses on Campus Suicide Prevention

Utilizing a \$299,442 Campus Suicide Prevention Grant through the Substance Abuse and Mental Health Services Administration, SIUE is in its second year of implementing the iCARE suicide prevention initiative. The initiative is managed collaboratively by the Schools of Nursing and Pharmacy, and Counseling Services.

iCARE increases awareness and education in recognizing at-risk behaviors of students in crisis, improves campus policies and procedures for assisting these students, and reduces negative stigmas of counseling and help-seeking.

"This next year we will continue working on standardized training for faculty, staff, and students," said Rebecca Luebbert, PhD, associate professor of primary care and health systems nursing. "I am also interested in exploring barriers to seeking help for suicidal thoughts and behaviors within the LGBTQ community on campus."



## Retirements

**Paul Darr**  
Clinical Assistant Professor  
11 years of service to the  
School of Nursing



**Karen Kelly**  
Associate Professor  
15 years of service to the  
School of Nursing



**Marietta Bell-Scriber, Instructor**  
5 years of service to the School of Nursing

## In Memory

Haley Nicole Michel, of Bethalto, died Saturday, April 29, at age 20 following a short but valiant battle with stage four non-Hodgkins lymphoma and hemophagocytic lymphohistiocytosis (HLH), a rare immune condition.

Michel was extremely passionate about her nursing education, serving as a member of the National Society of Collegiate Scholars and Phi Eta Sigma National Honor Society. She was also recognized on the Dean's List. In her free time, Michel enjoyed running, hiking, biking and spending time at the gym. Her dedication to her education was inspiring, and her loss is felt deeply within the School.



# Global Impact

## Students and Faculty Grow Through Global Initiatives

Global experiences, including international exchange programs and service-based trips, provide students and faculty with once-in-a-lifetime opportunities to provide patient care to populations in need all around the world. These experiences will also prepare students for the vast array of challenges they may experience throughout their career. The School is now providing a variety of global learning experiences for its students.

### Guatemala

Through ER Abroad Mission Impossible, Deborah Horton traveled to Antigua, Guatemala, earning clinical hours toward her master's in the family nurse practitioner program. There, she saw diseases in advanced stages that are rarely seen in the United States.

"The diverse clinical experience greatly enhanced my assessment skills," Horton said. "I learned about the culture and lifestyle of the local population and how to teach them to prevent disease and injuries."

### Haiti

Valerie Griffin, DNP, assistant clinical professor, and Chontay McKay, FNP-BC, lecturer, traveled to Haiti separately with medical mission teams to set the groundwork for future faculty-led medical mission trips for students in the family nurse practitioner (FNP) program.

"Global missions will allow FNP students at SIUE to have a unique and interprofessional clinical experience," Griffin added. "Through global leadership, students learn service, diversity and compassion for underserved populations."

### Costa Rica

The Schools of Nursing; Education, Health and Human Behavior; Dental Medicine, and the Office of International Affairs are partnering with Central American Mission Projects to create new opportunities for global student experiences. Faculty and students will provide health screenings, health education and dental care.

"It is our goal to enrich students' learning and expand our reach in new, incredible ways," said Laura Bernaix, PhD, dean of the School of Nursing. "We don't want to limit our impact on health to only this region, so providing health screenings in Costa Rica offers tremendous opportunity for our students."

### Australia

Beginning next fall, Nursing students have the opportunity to participate in a newly developed student exchange program with Holmesglen Institute in Melbourne, Australia. Two SIUE students will visit Holmesglen for two weeks in July. In turn, two Holmesglen students will visit SIUE for two weeks in late October.

"Students in the program will visit classes, attend clinicals at a variety of agencies, and observe clinical practices of multiple healthcare providers, all with the goal of comparing and contrasting differences and similarities in healthcare delivery models, healthcare systems, and provider roles and scope of practice," Bernaix said.

To support students' academic and personal growth through the Global Experience initiative, visit [siue.edu/nursing/giving](http://siue.edu/nursing/giving), or mail a gift using the envelope provided.



# Recognizing our Donors

The School of Nursing is grateful to the following donors for their generous support during fiscal year 2017. These gifts provided scholarships and professional development experiences for students, and directly advanced global education experiences, simulated learning center enhancements and WE CARE Clinic innovations. Thank you for partnering with the School to achieve excellence in nursing education, research and service.

For more information on how to give to the SIUE School of Nursing, use the enclosed envelope, visit [siue.edu/nursing/giving](http://siue.edu/nursing/giving), or contact Patricia McDonald at [pmcdona@siue.edu](mailto:pmcdona@siue.edu) or 618-650-3906.

### Red Diamond (\$25,000 +)

Dr. Mary C. Mulcahy

### Diamond Sponsor (\$10,000 - \$20,000)

Laerdal Medical Corporation  
Dr. Gloria R. Perry and Mr. Albert T. Perry

### Garnet (\$5,000 - \$9,999)

Dr. Rita E. Boyd '78 '91 and  
Dr. Roger E. Boyd '97 '98  
Dr. Sally Anne G. Perry '91 and  
Mr. Robert J. Micketts  
Mr. Mike N. Wenzel '70 and  
Mrs. Kathy A. Wenzel '71

### Emerald (\$2,000 - \$4,999)

Dr. Laura W. Bernaix '78 and  
Mr. Terry W. Bernaix  
Cribbage Board Collector's Society  
Mr. John M. Juhasz '66 and  
Mrs. Joyce A. Juhasz  
Judge Philip J. Rarick '65  
SIUE Student Nurses Association

### Amethyst (\$1,000 - \$1,999)

Dr. Marjorie A. Fonza-Thomason '86  
Dr. Samuel Goldman  
Mrs. Jennifer K. Hertel '09 and  
Mr. Kurt Hertel  
Hospital Sisters Health System  
HSHS St. Elizabeth's Hospital  
Mrs. Maxine A. Johnson '69 '83 and  
Mr. John J. Johnson Jr. '83  
Dr. Tom P. Layloff and Mrs. Georgia A. Layloff  
Dr. Ann M. Popkess and  
Mr. William R. Popkess Jr.  
Col. Patricia O. Robison '81  
Mr. Mark S. Shashek '87  
St. Clair County Medical Society Alliance  
Dr. Lynn D. Ward '66 '75 '87

### Sapphire (\$500 - \$999)

Dr. Roberta L. Harrison  
Ms. Emmy A. Moore '10  
Mrs. Sandra L. Spilotro '69 and  
Mr. Peter Spilotro  
Mr. Duane O. Steiner and  
Mrs. Melanie Steiner  
Ms. Anna M. Viera and Mr. Bai Nyonyl  
Dr. Cindy L. Womack '13 '17

### Ruby (\$250 - \$499)

Ms. Nayana Annam  
Arkox International Consulting LTD  
Mrs. Georgia L. Backer '79

Mrs. Cheryl L. Bednar '74 '01 and  
Mr. Ronald L. Bednar Sr. '71 '76  
Dr. Rhonda W. Comrie  
Mrs. Carla C. Cox '89  
Ms. Janet L. Cross '72  
Mr. Zach F. Davis '09  
Dr. Betty R. Fadden '77 '84  
Ms. Karen S. Filipowski  
Ms. Sharon K. Freeman '83  
Ms. Brenda J. Gabbett '85  
Mr. Cody R. Gowler '09 and  
Mrs. Andrea J. Gowler '08  
Mr. Nick L. Hogan '09  
Ms. Mary D. Keenan '84  
Mrs. Carolyn F. Labouliere '68 '73  
Mr. Douglas Mayfield  
Mrs. Patricia L. McBride  
Ms. Patti A. McDonald  
Ms. Joann McGeesmith  
Ms. Donna E. Meyer '78 '82  
Mr. Douglas Michaelson  
Ms. Dia Milazzo  
Dr. H. Catherine Miller '86  
Mrs. Diana L. Oakley '95  
Mr. Michael L. Rickher '12  
Ms. Linda F. Robert '90 '95  
Mr. Dave C. Tonry  
Mrs. Jeanette K. White '97

### Pearl (\$100 - \$249)

Academy of Medical Surgical Nurses  
Mr. Aaron J. Archer '10  
Ms. Julie A. Aulds  
B & D Farms  
Mr. Sonny H. Barrett '14  
Ms. Tammy J. Bartolomucci '04 '08  
Mrs. Marilyn K. Boatman '97 '07  
Dr. Jennifer L. Broeder '80  
Dr. Mary M. Brown '14  
Mrs. Beth E. Castaneda '96  
Mr. John Charles  
Mr. Joseph I. Chen '73 and  
Mrs. Fong-Jiao Chen '74  
Mrs. Carolyn S. Childs '72  
Mr. Kristopher P. Clements '10 '14  
Mrs. Karrie J. Clow '93 '01  
Dr. Nancy Creason  
Mrs. Cindy DeBoard  
Mrs. Dana L. Deisher '84 and  
Mr. David M. Deisher  
Mrs. Penny S. Dietz '08 and Mr. Tom G. Dietz  
Mr. David J. Dintelman '90  
Ms. Kristin Dobbs  
Doctors Oxygen Service, Inc.  
Dr. Christine R. Durbin and  
Dr. Patrick H. Durbin

Mr. Cody P. Dykes '14  
Mr. David A. Econie '90 and  
Mrs. Michelle Econie '91  
Ms. Sandra J. Evans  
Dr. Kay E. Gaehle  
Dr. Sharon A. Gerth '70  
Dr. Andrew T. Griffin and  
Ms. Valerie J. Griffin  
Ms. Senda C. Guertzen '67 '90  
Mrs. Becky A. Harms '87 and  
Mr. Daniel C. Harms  
Mr. Orville Heiden and Mrs. Janice L. Heiden  
Ms. Julie E. Heller '83  
Dr. Fuki M. Hisama  
Ms. Celeste E. Hogan '88  
Mr. Kevin W. Hutcheson '14  
Mrs. Catherine A. Isreal '06 '07  
Mrs. Cheryl L. Jackson '90 '98 and  
Mr. Michael J. Jackson  
Ms. Glenda B. Jeffries '14  
Dr. Debra Jenkins and Mr. Leonard R. Jenkins '78  
Mrs. Cynthia A. Johnson '90 and  
Mr. David E. Johnson '93  
Mrs. Kathleen A. Johnson '90 '00 and  
Mr. Kent L. Johnson  
Mrs. Diane Johnston  
Mrs. Kay R. Kelley Haudrich '78  
Mr. Kyle Kerkemeyer  
Ms. Lynda Klawita  
Mrs. Kathryn J. Knoblett '04  
Mr. Michael J. Kurth '93 '02 and  
Mrs. Mary K. Kurth '87 '95  
Ms. Angela V. Labadie '85  
Ms. Cassandra R. LeBeau '13  
Mr. Patrick Lillard and Mrs. Brenda H. Lillard  
Mrs. Sheryl A. Lutz '94  
Ms. Barbara A. Martin '88 and  
Mr. James R. Martin  
Mrs. Carole Hennessy Martz '78 and  
Mr. Michael Martz '76  
Ms. Lore A. Martz '81  
Ms. Diane K. McKaig and  
Mr. Tommy A. McKaig  
Mrs. Kelly R. Murray '95  
Mrs. Stacie B. Pavinato '83  
Mrs. Carol Payton '71  
Mr. Jeffrey J. Pool '95  
Mrs. Lucille T. Randolph '76  
Mr. Ryan R. Redmond '12  
Dr. Rene M. Reeb '66  
Ms. Amy E. Reed '09 '12 and  
Dr. Bradford J. Reed  
Ms. Chelsea C. Reinersman '14  
Mrs. Debra E. Rhoda '86  
Lt. Col. Roger Rucker '76 and  
Mrs. Delores J. Rucker  
Ms. Lisa R. Rybak '02

Mrs. Jennifer A. Schwigen '07 '10  
 Dr. Nelma C. Shearer '88  
 Mrs. Donna S. Shepard '73 '94  
 Mrs. Marcia Slightom '67  
 Mr. David L. Stark  
 Ms. Karen L. Strohmeier '79 '80 '88  
 Mr. Jody P. Sutton '14  
 Mrs. Ramona A. Tomshack '87  
 Ms. Barbara S. Wagner '66  
 Mr. Kristofer N. Warren '14  
 Mrs. Nancy R. Weston '77 '94 and  
 Rev. Edward R. Weston '73  
 Mr. James R. Whiting '77  
 Mrs. Bonita F. Wolff '90 and  
 Mr. William A. Wolff  
 Dr. Valerie J. Yancey and  
 Rev. William L. Yancey

### Supporters (Up to \$99)

Ameren Corporation  
 Mrs. Linda S. Archer '78  
 Ms. Melissa R. Arnold '09  
 Mrs. Cynthia S. Aschoff '78  
 Ms. Michele L. Bachmann  
 Mrs. Lynn C. Baer '97  
 Mrs. Sheri L. Banovic '88 '91 and  
 Mr. Kevin Banovic  
 Mrs. Mary K. Barlett '85 '09 and  
 Mr. Gary B. Barlett  
 Ms. Cindy L. Barnett '73  
 Mrs. Janice Barton '67  
 Ms. Rachelle N. Bauerle '06 and  
 Mr. William J. Bauerle '04  
 Ms. Marilyn E. Baumann '88 '95 and  
 Mr. David R. Baumann  
 Bell Medical, Inc.  
 Mr. Robert R. Bergseth '73  
 Mrs. Edith C. Blackburn '81  
 Mrs. Donna K. Bond '71  
 Mrs. Donna J. Boushard '95  
 Mr. Bart S. Bowers  
 Ms. Kathleen A. Boyer '76  
 Mrs. Mary Jo Brown '75 '01  
 Ms. Margaret L. Burns '13  
 Mrs. Patricia E. Carr '01  
 Mrs. Joann J. Clemens '95 and  
 Mr. James C. Clemens  
 Mr. Vincent Compton  
 Ms. Sheri Compton-McBride '10 and  
 Mr. Robert J. McBride  
 Ms. Teresa M. Cornelius '10  
 Mrs. Donna K. Crees '87  
 Mrs. Marilyn A. Cron '76 '93  
 Dr. Mary R. de Meneses  
 Mr. Timothy S. Denney '14  
 Mrs. Rachel L. Dickemper '03 '08 and  
 Mr. Kevin M. Dickemper '04  
 Mrs. Penny L. Dixon '13 and  
 Mr. Richard L. Dixon  
 Mrs. Karen S. Doane '79  
 Mrs. Courtney J. Dodsworth '03 and  
 Mr. Matthew B. Dodsworth  
 Mrs. Diane M. Eastman '80 and  
 Mr. Lawrence E. Eastman  
 Mrs. Beth R. Eggemeyer '12  
 Mrs. Sheri E. Engel '95  
 Mr. Gregory S. Feilner  
 Mrs. Jayne E. Fiaush '01 '05  
 Mrs. Lisa French  
 Ms. Laura A. Gardner '93

Mrs. Viola E. Genadio '90 and  
 Mr. Frank Genadio  
 Mrs. Virginia D. Gifford '84 '87 and  
 Mr. James L. Gifford  
 Mr. Peter J. Gillen '14  
 Mr. Charles H. Grider III '93 and  
 Mrs. Debra L. Grider  
 Mrs. Sharon K. Grider '66  
 Mrs. Marsha J. Haake '91  
 Mrs. Carolyn S. Haerr '74  
 Mrs. Clara M. Halliday '86  
 Ms. Kimberlee J. Hansen '95  
 Ms. Tarah M. Haskenherm '13 and  
 Mr. Brian A. Haskenherm '13  
 Mrs. Gerri H. Hellhake-Hall '97  
 Mrs. Donna C. Henry '68 '87  
 Mrs. Eva M. Hopp '92  
 Mrs. Renee B. Hottel '86  
 Mrs. Diane L. Ingram '93  
 Ms. Robyne A. Ingram  
 Ms. JoEllen Juenger '10 '13  
 Ms. Jane M. Kamp '94 '01  
 Ms. Dorothy A. Kane '12  
 Ms. Kaitlyn D. Karleskint  
 Mrs. Rhonda K. Kelley '91  
 Ms. Abby E. Klaus  
 Ms. Michele D. Klodt '09  
 Ms. Oksana S. Koeppen  
 Ms. Christine M. Kohler '01  
 Ms. Jean LaFollette  
 Ms. Mary L. Lages '92  
 Mrs. Jeri L. Lewis '89 '95  
 Ms. Judith A. Lidy '89  
 Ms. Alison R. Luckett '10  
 Mrs. Valerie A. Mack '79  
 Mr. Matthew B. Marten '11  
 Mrs. Charlotte M. Martin '91 and  
 Mr. Wilburn D. Martin  
 Mrs. Deborah A. Martin '01  
 Ms. Marissa B. Menke '11  
 Mrs. Norma W. Merriweather '93 and  
 Mr. Ronald L. Merriweather  
 Mrs. Therese J. Michelau Kelly '79  
 Mr. Andrew M. Miller '11  
 Mrs. Margaret C. Miller '72 '88 and  
 Mr. Frank D. Miller  
 Mrs. Mary C. Moellering '81  
 Mrs. Alice A. Mooney '72  
 Ms. April A. Morthland '09  
 Mrs. Laura M. Mueller '84  
 Mr. Ben H. Nash  
 Ms. Amy Newlin  
 Mr. Gideon Nkrumah  
 Mr. Patrick O'Brien  
 Mrs. Maryann H. Pass '82  
 Mrs. Barbara J. Payne '87  
 Mrs. Beverly J. Pohlman '80  
 Mr. Nick J. Raburn  
 Ms. Penny K. Raburn '15  
 Ms. Carly A. Rambo  
 Mrs. Cheri H. Reed '98 and  
 Mr. John L. Reed  
 Ms. Kendra L. Ricketts  
 Mr. Erik G. Sanders '10  
 Ms. Vickie L. Schaltenbrand '80  
 Ms. Veronica L. Schaufelberger '10  
 Mrs. Susan Scheller  
 Mrs. Kathleen A. Schmidt '93 and  
 Mr. Robert O. Schmidt  
 Ms. Maghy A. Schrage '13

Mrs. Sarah E. Schumacher '03  
 Ms. Kimberly A. Simpkins '08  
 Ms. Janet J. Sliva '95  
 Mrs. Shelle D. Sloan '06  
 Mrs. Gloria J. Small '83 and  
 Mr. John H. Small '74  
 Ms. Deborah D. Smith '00  
 Mrs. Shelia M. Smith '93  
 Ms. Whitney J. Smith '14  
 Ms. Janet S. Sprehe '88 '94  
 Ms. Julia L. Stanfill '87 '96  
 Mrs. Rebecca S. Stephens '06 and  
 Mr. Randy J. Stephens  
 Mrs. Cheryl A. Stroot Green '83 '07 and  
 Mr. Timothy R. Green  
 Ms. Carole Sullivan  
 Ms. Erin M. Swinger '06  
 Mrs. Diana S. Szaras '72  
 Ms. Tanisha M. Tillman  
 Mr. Jacob P. Turner  
 Mrs. Judith L. Waligorski '68  
 Ms. Kelsey A. Wallace  
 Ms. Nikki Watson  
 Ms. Mary Anne A. Wehrle '66  
 Ms. Jacqueline C. Whiting '90  
 Ms. Jamie L. Wiegmann  
 Ms. Michelle M. Willemarck '08  
 Mrs. Jean M. Williams '93  
 Ms. Rhonda K. Wilson '03  
 Mrs. Cynthia J. Winfield '05  
 Ms. Jenna M. Winters  
 Mrs. Laura A. Worms '69 '79 '85  
 Mrs. Felicia E. Wray '94  
 Mrs. Mary Beth Wuellner-Turvey '73  
 Mrs. Janet E. Zeidler '77 '94  
 Ms. Mary E. Zerlan '79 '96

### Matching Gifts

Ameren Corporation Charitable Trust



## School Hosts 10th Annual Scholarship and Award Luncheon

The School of Nursing celebrated student achievement and gratefully acknowledged its donors during the 10th Annual Scholarship and Award Luncheon held in April.

Scholarships worth approximately \$26,000 were awarded to 39 students.

“The luncheon celebrates the wonderful partnership our scholarship donors and recipients are forming,” said Patti McDonald, senior director of development. “Philanthropic partnerships change lives. We are incredibly thankful to each of our donors for supporting our students on their path toward future success in nursing.”

President of the alumni advisory board Rachel Smiley, BSN '11, MS Health Care and Nursing Administration '15, emphasized that donor support for nursing students “helps humanity.”

“The best part of this annual event is seeing the promise we have in our future nurses,” she said. “Our profession will be in great hands. We thank our donors for their generosity and support. They are helping these students achieve their dreams—which really are about helping people.”

To scholarship recipients, she added, “Believe me when I say, these awards are truly gifts that will propel you in your nursing journey.”



## 2017 Scholarships and Recipients

### Ann Heiden Wharton Memorial Nursing Award

Monica Young

### Anthony Oliver & Felissa Lashley Award in Nursing

Melissa Wilson

### Bette Bemis Nursing Scholarship

Christopher Wiley

Bernal Thompson

Holly Valette

### Cecil Howard Griffin & Florence Bowmaster Griffin Scholarship

Neil Frydrych

Sydney Tate

### Chancellor Sam Goldman Scholarship for Nursing Excellence

Kaylee Boland

### Gloria Perry RN-BSN Student Achievement Award

Kimberly Roy

### Janet N. Rarick Scholarship for Nursing

Kara Kucinick

### Janice M. Bloomfield Memorial Nursing Student Scholarship

Emmanuel Bopeya

### Nursing Alumni Heritage Award Scholarship

Mackenzie Schutt

Kaitlyn Karleskint

### Nursing Gems of 2009 Award

Jesse Hocking

### Outstanding Student In Nursing Award

Katelyn Hardiek

Bailey Wynn

### Pearl Morgan Memorial Award in Pediatric Nursing

Miranda Sellars

### Perry Graduate Excellence Award in Nursing

Camille Scott

### Pre-Clinical Nursing Scholarship

Deanna Othman

Alec Gee

Carmen Huddleston

Jordan Schaal

### Roberta Lee MacDonald Memorial Award

Maria Carrillo Quijano

### Rose M. Juhasz Memorial Nursing Scholarship

Kristin Hoyt

### Scholarship for Excellence

Connor Wolf

Erin Brueggemann

### Shirley Strohmeier Memorial Nursing Award

Branna Heaton

### SIUE School of Nursing Faculty Scholarship-Carbondale

Jaeden Barlow

### SIUE School of Nursing Faculty Scholarship-Edwardsville

Kourtney Klette

### SIUE Student Nurses Association Scholarship

Bethany Geisler

Megan Hesar

Miranda Hammond

Kevin Robards

Courtney Zamarione

### St. Clair County Medical Society Alliance Scholarship

Emily Hartmann

### The Winston Family Scholarship for Nursing (SNAP)

Kimberly Daum

Whitney Knowles

### Lucille Helwig Memorial Scholarship Endowment

Stephanie Donjon

## Faculty Achievements

### GRANTS

#### Dr. Jerrica Ampadu

**Ampadu, J.** (2016). Nursing workforce diversity. Student Nurse Achievement Program. Renewal Funding by Health Resources and Services Administration. (\$337,833).

#### Dr. Rhonda Comrie

**Comrie, R.** (2016). Illinois Department of Public Health. Asthma Trigger Assessment Program. Primary Investigator. (\$44,000)

#### Dr. Andrew Griffin

**Griffin, A.** (2016). Nurse Anesthesia Traineeship Grant (NAT), \$19,585.00. U.S. Department of Health and Human Services. Primary Investigator

#### Dr. Valerie Griffin

#### Dr. Kathy Ketchum

**Griffin, V. & Ketchum, K.** (2016). Advanced Education Nursing Traineeship (AENT) Program. Health Resources and Services Administration (HRSA). (\$349,272)

#### Dr. Rebecca Luebbert

Gable, K., Herndon, C., Linsin, J., **Luebbert, R.** (2016). iCare: Initiative to create awareness, recognition, and education. SAMHSA. Grant: \$96,208.

Herndon, C., Rowland, K., Ferguson, M., **Luebbert, R.** (2016). NIH center of excellence in pain education at SIUE. National Institutes of Drug Abuse. Grant: \$121,161.

#### Dr. Ann Popkess

**Popkess, A.** (2016). Collaborative Service Agreement SSM DePaul Health Care. SSM DePaul Health Care. Funded (\$35, 000)

#### Dr. Melodie Rowbotham

**Rowbotham, M. & Beard, R.** (2016). Faculty Scholar Award, \$1,500. Principle Investigator, School of Nursing, SIUE

#### Dr. Carole Sullivan

**Sullivan, C.** (2016). SIUE Excellence in Undergraduate Education internal, competitive award titled "Integrating Simulation in Pediatrics in a Prelicensure Baccalaureate Nursing Program." (\$4025.00)

#### Dr. Kim White

**White, K.** Butler, L., Wesley, C. Henley, G. (2016) Nurse Education, Practice, Quality, and Retention: Interprofessional Collaborative Practice. Renewal funding by Health Resources and Services Administration. (\$368,385)

### FACULTY PUBLICATIONS

#### Dr. Mary Lee Barron

Alul, H., **Barron, M.L.**, Armbrecht, E. & Koetting, C. (2016) Implementing webinar training to improve appropriate antibiotic prescribing. *Pharmacy Times*, August. Retrieved from: <http://contemporaryclinic.pharmacytimes.com/journals/issue/2016/august2016/implementing-webinar-training-to-improve-appropriate-antibiotic-prescribing/P-1>

**Barron, M.L.**, (2016). At-home detection of ovulation by urinary progesterone. *Ethics & Medics*. 41, (12).

Snell, M., **Barron, M.L.** & Koetting, C. (2016). Improving the detection of trichomonas vaginalis: A tricky situation. *Journal of Nurse Practitioners*, 12(4), 271-276.

#### Dr. Chaya Gopalan

**Gopalan, C.**, Shah, B., Khan, T. & Taylor, G. (2016). The effect of perinatal blockade of androgen receptors on the expression of hypothalamic estrogen receptor- $\alpha$  and sexual motivation in male rats. *The FASEB Journal*, 30 (1), 1247.2-1247.2.

**Gopalan, C.** (2016). The impact of rapid change in educational technology on teaching in higher education. *Journal of the Human Anatomy & Physiology*, 20(4).

**Gopalan, C.** (2016). The use of innovative active learning strategies on student learning outcomes. *MOJ Anatomy & Physiology*, 2(2).

**Gopalan, C.** (2016). Flipped classroom combined with team-based learning in engaging students in the classroom. In Overmyer, J., Yestness, N., Eds. *Proceedings of the 1st Annual Higher Education Flipped Learning Conference*, Greeley, CO., pages 92-96.

**Gopalan C.** (2016). Are you ready to flip your classroom? *Physiology Education Community of Practice for the Life Science Teaching Resource Community*, (LifesciTRC.org).

**Gopalan, C.** & Kist, W.B. (2016). Hyper IgM syndrome - Switch or not to switch. *National Center for Case Study Teaching in Science*: <http://sciencecases.lib.buffalo.edu>

Hadgu, R.M., Huynh, S. & **Gopalan, C.** (2016). The use of pre-recorded lectures on student performance in physiology. *Journal of Curriculum & Teaching*, 5(1), 105-112.

#### Dr. Lisa Green

Curtis, M., Bultas, M., Ercole, P. & **Green, L.** (2016). Enhancing cultural competency in nursing students. *Online Journal of Cultural Competence in Nursing and Healthcare*, 6(1), 1-13.

#### Dr. Valerie Griffin

Aruda, M., **Griffin, V.**, Schartz, K., & Geist, M. (2016). Evolving role of pediatric nurse practitioners. *JAANP*, 28(2), 68-74.

#### Dr. Rebecca Luebbert

#### Dr. Amelia Perez

**Luebbert, R.A. & Perez, A.** (2016). Barriers to clinical research participation among African Americans. *Journal of Transcultural Nursing*, 27(5), 456-463.

#### Dr. Cynthia Schmidt

Bouvier, D., Hinz, J., & **Schmidt, C.** (June, 2016). Pilot Study: User acceptance of a virtual coach in a mirror by elderly persons with dementia. Paper session presented at the meeting of Pervasive Technologies Related to Assistive Environments (PETRA), Corfu Island, Greece. ACM 978-1-4503-4337-4/16/06

### BOOKS, BOOK CHAPTERS, INVITED WORKS

#### Ms. Jill Cash

**Cash, J.** and Glass, C. (2016). *Adult-Gerontology Practice Guidelines*, Springer Publishing LLC, New York, New York

#### Dr. Chaya Gopalan

**Gopalan, C.** (2016-2017). *Anatomy & physiology interactive text*, J. Crivello & Redden, J., eds. Top Hat E-books.

**Gopalan, C.** (2016). *Anatomy & Physiology for Nurse Anesthesia Students*. Top Hat Publishing E-books.

### FACULTY PRESENTATIONS

#### Ms. Angela Andrews

**Andrews, A.**, Russell, C.L., & Cheng, A.L. (March 18, 2016). *Interventions to improve medication adherence in older adults with heart failure: A systematic review*. Midwest Nursing Research Society, Milwaukee, WI; Poster presentation

#### Mr. Nicholas Curdt

**Curdt, N.** (October 8, 2016). Multimodal pain management. *Illinois Society of Perianesthesia Nurses*, 2016 ILSPAN Conference, Edwardsville, IL.

**Curdt, N.** (October, 2016). Title not available. *Missouri Association of Nurse Anesthetists*. St. Louis, MO.

Poirier, T., Ronald, Wilhelm, M., **Popkess, A.**, Roucka, T., **Durbin, C.** (July, 2016). Interprofessional error disclosure: Training simulation for dental medicine, nursing, and pharmacy students. *American Association of Colleges of Pharmacy Annual Meeting*. Poster presentation. Anaheim, CA.

#### **Dr. Chaya Gopalan**

**Gopalan, C.** (2016). Flipped teaching in higher education, *Universidad Autonoma de San Luis Potosi Facultad de Medicina*. Workshop presentation.

**Gopalan, C.** (2016). Using recorded lectures for flipped classrooms. *American Physiological Society's Institute on Teaching and Learning (APS-ITL)*. Madison, WI.

**Gopalan, C.** (2016). Using team-based learning in large classes. Southern Illinois University Edwardsville, Edwardsville IL.

**Gopalan, C.** (2016). Flipped classroom combined with team-based learning in engaging students in the classroom. *1st Annual Higher Education Flipped Learning Conference*. Podium presentation. Greeley, CO.

**Gopalan, C.** (2016), The effect of flip teaching on student performance. Ignite Speech. 1st Annual Higher Education Flipped Learning Conference. Podium presentation. Greeley, CO.

**Gopalan, C.** (2016). Use of active learning strategies to improve student learning outcomes. *Nurse Educator's Conference in the Rockies*. Podium presentation. Breckenridge, CO.

**Gopalan, C.** (2016). Use of flipped classroom teaching approach on student performance in physiology. *EB Conference*. Poster presentation. San Diego, CA.

**Gopalan, C.** (2016). The effect of perinatal blockade of androgen receptors on the expression of hypothalamic estrogen receptor- $\alpha$  and sexual motivation in male rats. *EB Conference*. Poster presentation. San Diego, CA.

#### **Dr. Valerie Griffin**

**Griffin, V.** (March, 2016). Common sexually transmitted diseases: STD 101. SIUE Student Success Center.

#### **Dr. Debra Jenkins**

**Jenkins, D.** & Meuser, T. (November, 2016) Exploring attitudes and beliefs of the advanced practice nurse's role with older adults drivers, podium presentation, Gerontological Society of America, New Orleans, LA

#### **Dr. Karen Kelly**

**Kelly, K.** (November, 2016). Advocating for hospice care. *34th Annual Southern Illinois Hospice Conference*. Edwardsville, IL.

#### **Dr. Rebecca Luebbert**

**Luebbert, R.A.** (October, 2016). Rethinking drinking...And other substances. *St. Luke's Hospital Clinical Symposium. Dimensions of Mental Health: When Nursing Presence Matters Most*. Podium presentation. St. Louis, MO.

Ferguson, M., Rowland, K., Pandarakalam, C., Tait, R., & **Luebbert, R.A.** (Oct. 2016). National Institutes of Health Pain Consortium Centers of Excellence in Pain Education: Assessment of a burning mouth syndrome learning module to instruct future health professionals; *Midwest Pain Society 40th Anniversary Scientific Meeting*. Poster presentation. Chicago, IL.

**Luebbert, R.A.** & **Popkess, A.** (April, 2016). Attitudes and beliefs regarding suicide assessment by non-psychiatric, hospital-based nurses. *Nurse Educator Institute*. Poster presentation. Branson, MO.

#### **Dr. Frank Lyerla**

**Lyerla F.** (October 2016). The impact of information technology on nursing malpractice. *Illinois Society of Perianesthesia Nurses -Fall Conference*. October 8, 2016. Edwardsville, Illinois.

**Lyerla, F.** (September 8, 2016) Topics within healthcare informatics: Patient portals, Personal Health Records, and Information Exchange. Lifelong Learning Program Southern Illinois University Edwardsville. September 28th, 2016. Edwardsville Illinois.

#### **Dr. Amelia Perez**

**Perez, A.,** & Luebbert, R. (2016, July). Health behaviors and literacy in diverse students. National Association of Hispanic Nurses Annual Research Conference, Chicago, IL; Podium presentation

**Perez, A.,** & Luebbert, R. (2016, March). Differences in health literacy and health behaviors among diverse college students. 22nd annual Memorial Medical Center Annual Research Conference, Springfield, IL; Podium presentation

**Perez, A.,** & Luebbert, R. (2016, March). Differences in health literacy and health behaviors among diverse college students. Midwest Nursing Research Society Annual Conference, Milwaukee, WI; Podium presentation

#### **Dr. Ann Popkess**

#### **Dr. Christine Durbin**

**Popkess, A.** Poirier, T., Ronald, Wilhelm, M., Roucka, T., **Durbin, C.,** (November 10-112016). Interprofessional error disclosure: Training simulation for dental medicine, nursing and pharmacy students. 20th Annual Midwest Regional Nursing Educators Conference, Columbia, MO, November 10-11, 2016.

Poirier, T., Ronald, Wilhelm, M., **Popkess, A.** Roucka, T., **Durbin, C.,** (2016). Interprofessional error disclosure: Training simulation for dental medicine, nursing and pharmacy students. American Association of Colleges of Pharmacy Annual Meeting, Anaheim, CA.

#### **Dr. Melodie Rowbotham**

**Rowbotham, M.** & Rackham, M. (July 14 – 17, 2016). Helping students come alive: Motivation 101. Peer reviewed podium presentation at the Nurse Educator Conference in the Rockies, Breckenridge CO.

#### **Dr. Valerie Yancey**

**Yancey, V.** (May 4, 2016). Being human: Hanging on and letting go. Joan Berkley Bioethics Symposium, University of Kansas, Kansas City, MO.

**Yancey, V.** (April 21, 2016). Happiness and health in aging. Lutheran Senior Services. Pere Marquette, Grafton IL.

**Yancey, V.** (March 15, 2016). Nursing presence and mindfulness: Essential components of relationship based care. Memorial Hospital Certified Nurse Awards Dinner. Belleville, IL.

**Yancey, V.** (October 14, 2016). An attitude of gratitude: The power of positive emotions for well-being. Lutheran Senior Services Annual Lectures Series, St. Louis MO.

## HONORS AND AWARDS

**Dr. Rachael Beard** was honored as a 40 Under 40 Emerging Nurse Leader, Illinois Nurses Foundation, 2016.

**Dr. Mary Boyd** received AJN Book of the Year Award First Place for *Psychiatric Nursing: Contemporary Practice* (5th ed. Enhanced), Philadelphia: Lippincott, Williams, & Wilkins, and AJN Book of the Year Award Second Place for *Essentials of Psychiatric Nursing* (1st ed.) Philadelphia: Wolters & Kluwer.

**Dr. Kay Gaehle** was named 2016 March of Dimes Nurse of the Year Award for Education.

**Dr. Chaya Gopalan** received the STEM Faculty Research Fellowship and the Faculty Scholar Award.

**Dr. Amelia Perez** was saluted for her teaching skills and accomplishments with the 2016-2017 SIUE Teaching Distinction Award.

## Upcoming School of Nursing Gala to “Honor the Past and Empower the Future”

Alumni, faculty, staff, students, community partners and friends are encouraged to mark their calendars for the School's upcoming bi-annual “Honoring the Past-Empowering the Future” gala. The all-alumni reunion and campaign recognition gala will be held October 27, 2018 at the James S. McDonnell Planetarium located in Forest Park in St. Louis.

The gala will feature a cocktail reception, dinner and entertainment.

The gala will celebrate the ongoing successes and advancements made by current and former School of Nursing alumni who are nursing clinicians, educators, administrators and leaders throughout the region and beyond.





Alumni Hall, Room 2117  
Campus Box 1066  
Edwardsville, IL 62026-1006

## Upcoming Events

### **School of Nursing Convocation**

Friday, Dec. 15, 2017

### **School of Nursing Fall Commencement**

Saturday, Dec. 16, 2017

### **School of Nursing Spring Convocation and Commencement**

Friday, May 4, 2018

### **School of Nursing Gala**

Saturday, Oct. 27, 2018

[siue.edu/nursing](http://siue.edu/nursing)

